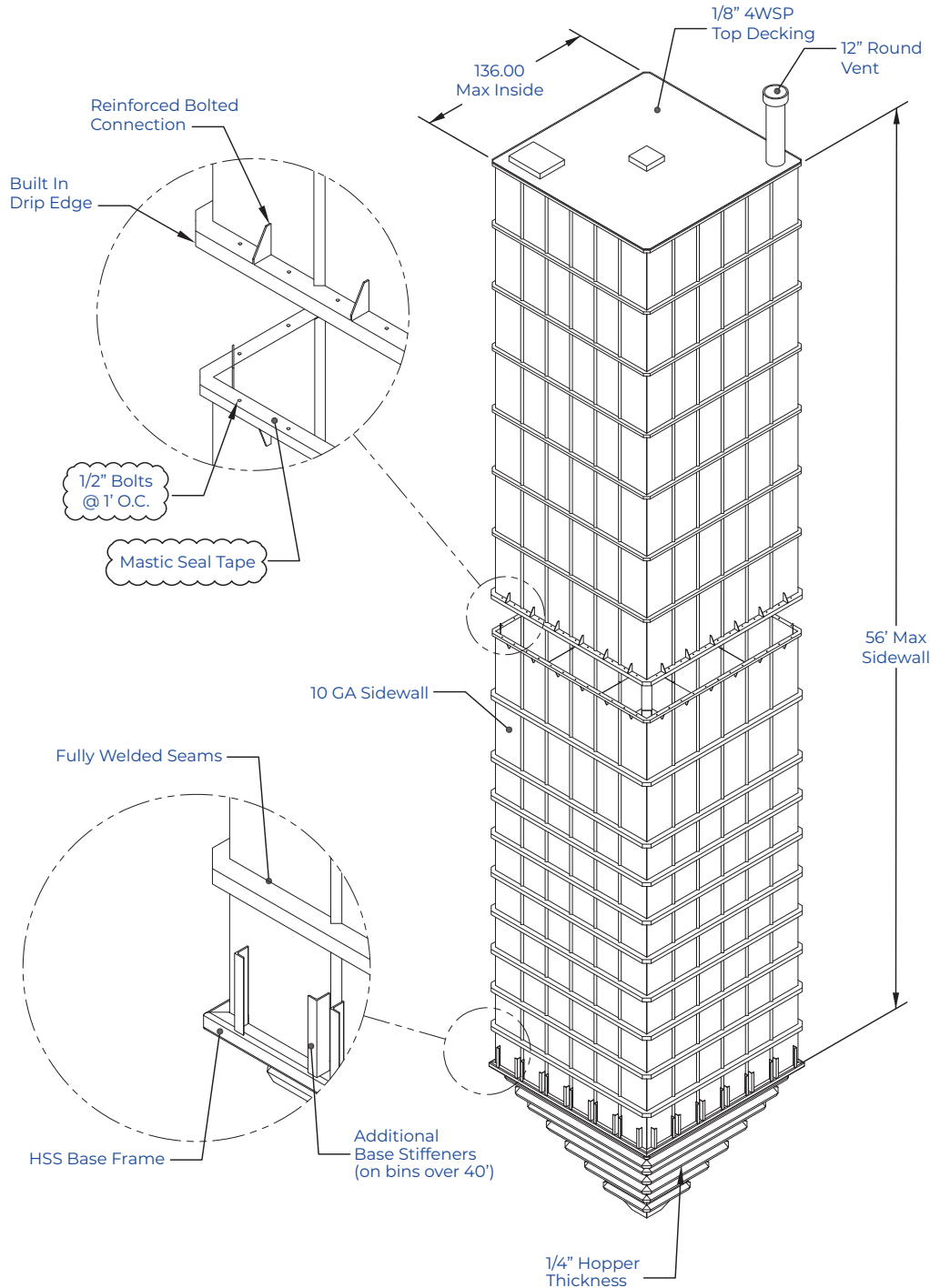


NEW Taller 2-Piece Welded Square Bulk Bin

STANDARD BIN FEATURES



Pre-engineered
up to 12'x12' wide
and 56' of
sidewall height



Two-piece design
with bolt-together
connection (for
bins exceeding 36'
of sidewall height)



Easy and efficient
installation –
significant labor
savings over
bolt-together bins



CONTACT US FOR YOUR CUSTOM STEEL PROJECTS!

NEW Taller 2-Piece Welded Square Bulk Bin

Quality Constructed Bins with Welded Seams Keeps Product In and Water Out

✓ FEATURES

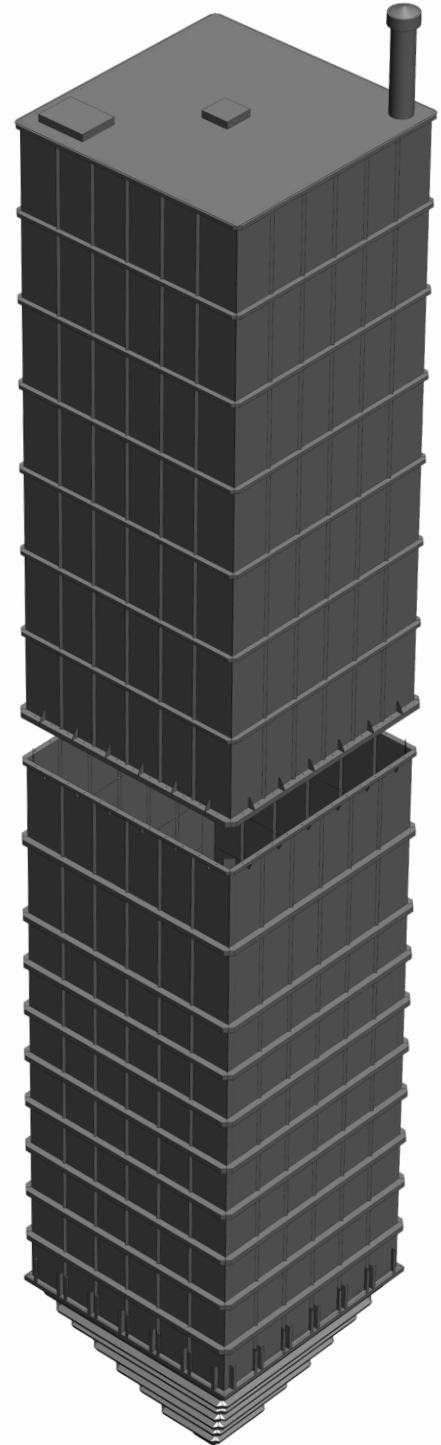
- > Bolt-together on the ground and lift entire unit in place
- > Built-in water drip edge above bolt-together connection
- > Custom hopper configuration
- > Square bin design easily accommodates building enclosures

✓ SPECIFICATIONS

- > Maximum capacity of 5,700 bushels or 143 tons of 40 lb material
- > 10 gauge sidewalls and 1/4 inch hoppers
- > Square tubing frame to weld bin in place on structural stand
- > Extra formed ribs to strengthen lower sections
- > Lifting brackets on both pieces
- > 1/8 inch top deck with 2 inch slope
- > Maximum bin weight 30,000 lbs (12'x12'x56' sidewall)

✓ OPTIONS

- > Standard colors include gray, white or black (color match available)
- > Lowry structural stand to support bin(s)
- > Gathering hoppers to collect flow of bin contents to combined discharge
- > Vibrator mounting brackets (vibrators not included) to aid flow of bin contents
- > Manual, air or electric gates to match hopper opening



Go online to find your closest dealer. www.lowrymfgco.com → Click on: [Find a Lowry Dealer.](#)



📍 Lowry, MN 56349 📞 320.283.5450 📞 800.950.4792
✉ info@lowrymfgco.com 🌐 www.lowrymfgco.com

CONTACT US FOR YOUR CUSTOM STEEL PROJECTS!